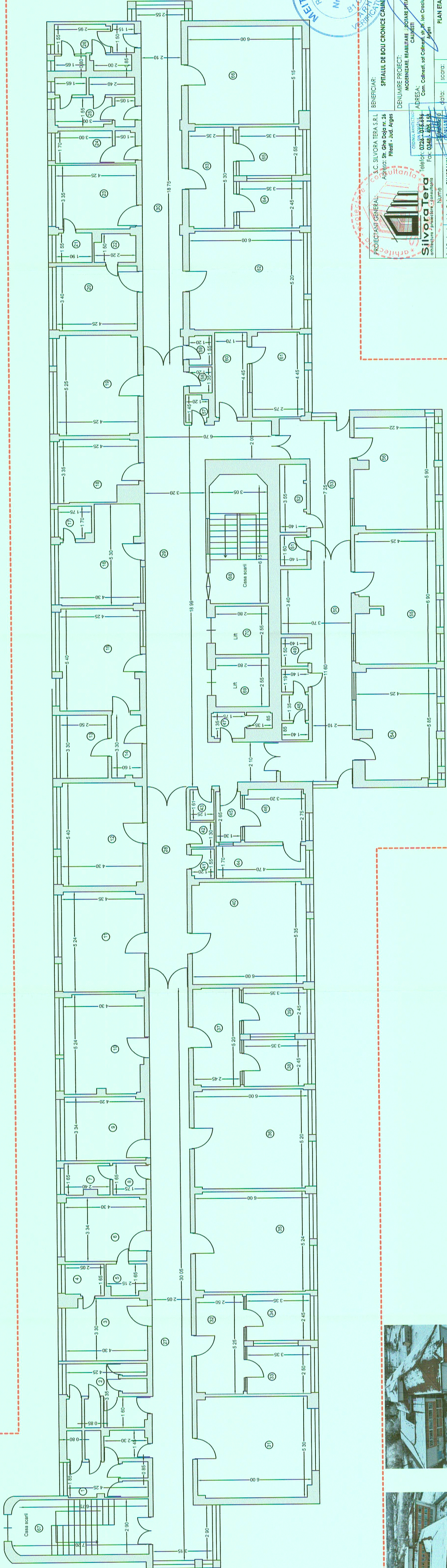
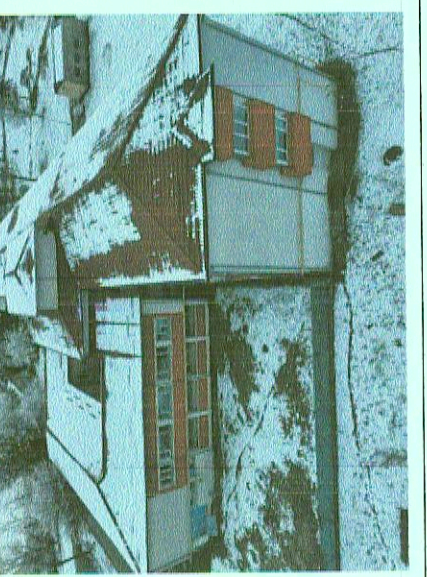
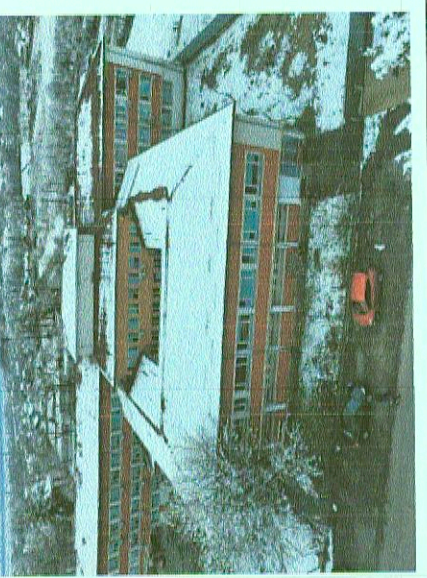
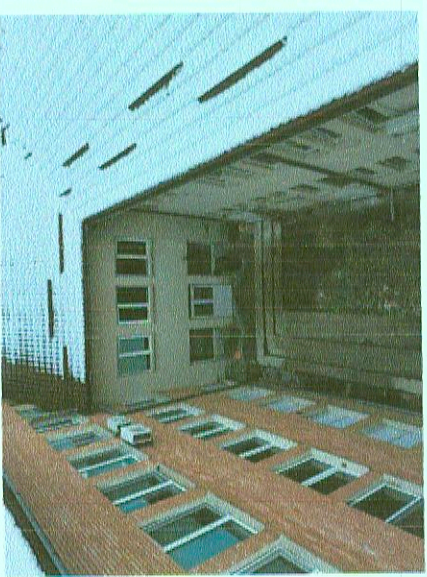


| Nr. | Denumire Incapere | Suprafata utila (mp) |
|-----|-------------------|----------------------|
| 1   | Grup Sanitar      | 13.0                 |
| 2   | Grup Sanitar      | 12.7                 |
| 3   | Salon             | 13.8                 |
| 4   | Grup sanitar      | 3.3                  |
| 5   | Grup sanitar      | 3.3                  |
| 6   | Salon             | 14.3                 |
| 7   | Grup sanitar      | 3.7                  |
| 8   | Grup sanitar      | 2.9                  |
| 9   | Salon             | 14.0                 |
| 10  | Salon             | 21.5                 |
| 11  | Salon             | 22.7                 |
| 12  | Salon             | 23.0                 |
| 13  | Bucatarie         | 8.3                  |
| 14  | Hol               | 5.2                  |
| 15  | Sala mese         | 22.7                 |
| 16  | Cabinet asistente | 18.8                 |
| 17  | Grup Sanitar      | 2.9                  |
| 18  | Cabinet medici    | 13.0                 |
| 19  | Salon             | 22.2                 |
| 20  | Salon             | 14.5                 |
| 21  | Grup Sanitar      | 3.0                  |
| 22  | Grup Sanitar      | 3.1                  |
| 23  | Salon             | 14.2                 |
| 24  | Grup Sanitar      | 6.8                  |
| 25  | Grup Sanitar      | 9.9                  |
| 26  | Grup Sanitar      | 9.3                  |
| 27  | Hol               | 65.0                 |
| 28  | Hol               | 19.2                 |
| 29  | Hol               | 84.0                 |
| 30  | Hol               | 39.3                 |
| 31  | Salon             | 31.4                 |
| 32  | Hol               | 12.8                 |
| 33  | Salon             | 8.4                  |
| 34  | Salon             | 8.2                  |
| 35  | Salon             | 31.3                 |

|                            |                          |      |
|----------------------------|--------------------------|------|
| 36                         | Salon                    | 31.1 |
| 37                         | Hol                      | 12.7 |
| 38                         | Salon                    | 8.2  |
| 39                         | Salon                    | 8.2  |
| 40                         | Salon                    | 32.0 |
| 41                         | Magazie                  | 1.8  |
| 42                         | Grup sanitar             | 1.6  |
| 43                         | Magazie                  | 2.0  |
| 44                         | Camera sterilizata       | 8.0  |
| 45                         | Hol                      | 3.5  |
| 46                         | Camera sterilizare       | 8.7  |
| 47                         | Grup Sanitar             | 3.5  |
| 48                         | Grup Sanitar             | 4.8  |
| 49                         | Depozit deșeur           | 2.1  |
| 50                         | Hol                      | 33.4 |
| 51                         | Magazie                  | 2.2  |
| 52                         | Depozit curatane         | 4.6  |
| 53                         | Hol                      | 18.5 |
| 54                         | Salon                    | 23.8 |
| 55                         | Salon                    | 28.4 |
| 56                         | Salon                    | 24.5 |
| 57                         | Camera centrata incendiu | 1.6  |
| 58                         | Magazie                  | 1.6  |
| 59                         | Magazie                  | 1.9  |
| 60                         | Hol                      | 7.6  |
| 61                         | Salon                    | 12.1 |
| 62                         | Salon                    | 31.1 |
| 63                         | Hol                      | 12.4 |
| 64                         | Salon                    | 8.2  |
| 65                         | Salon                    | 8.5  |
| 66                         | Salon                    | 30.7 |
| Suprafata Utila = 981.0 mp |                          |      |
| 67                         | Casa scarii              | 20.7 |
| 68                         | Casa scarii              | 20.3 |
| 69                         | Casa lift                | 7.1  |
| 70                         | Casa lift                | 7.1  |



**PROIECTANT GENERAL:**  
S.C. SILVORA TERA S.R.L.  
Adresa: Str. Ghe. Doja nr. 26  
Ploiesti - Jud. Arges

**PROIECTANT:**  
Arh. Catalina CIMPEANU  
Desenat: Arh. Adrian DICA-HIBSTU

**BENEFICIAR:**  
SPITALUL DE BOI CRONICE CALINESTI  
Ploiesti - Jud. Arges

**DENUMIRE PROIECT:**  
MODERNIZARE REABILITARE SPITALUL DE BOI CRONICE CALINESTI

**ADRESA:**  
Com. Calinesti, sat Calinesti, str. Ion Creanga, nr. 484, Jud. Arges

**SCALA:**  
1:100

**PLAN ETAJ 2 EXISTENT**

**PROIECTANT GENERAL:**  
S.C. SILVORA TERA S.R.L.  
Adresa: Str. Ghe. Doja nr. 26  
Ploiesti - Jud. Arges

**PROIECTANT:**  
Arh. Catalina CIMPEANU  
Desenat: Arh. Adrian DICA-HIBSTU

**BENEFICIAR:**  
SPITALUL DE BOI CRONICE CALINESTI  
Ploiesti - Jud. Arges

**DENUMIRE PROIECT:**  
MODERNIZARE REABILITARE SPITALUL DE BOI CRONICE CALINESTI

**ADRESA:**  
Com. Calinesti, sat Calinesti, str. Ion Creanga, nr. 484, Jud. Arges

**SCALA:**  
1:100

**PLAN ETAJ 2 EXISTENT**